

OPERATOR'S MANUAL

P30 SERIES



HK[®]
HECKLER & KOCH

ALL MODELS AND CALIBERS

SAFETY RULES:

Read this entire operator's manual carefully and thoroughly before using, handling or loading your firearm. The warnings and instructions in this operator's manual are important. Firearm safety is your responsibility. DO NOT use this firearm if you DO NOT fully understand the warnings and instructions in this operator's manual. Firearms can be dangerous if not handled properly or safely. Failure to follow the warnings and instructions in this operator's manual, or the improper use of this firearm, may result in serious injury or death, damage to the firearm, or other damage to property.

1. NEVER point a firearm in any direction other than a SAFE direction, e.g., down range.
2. Treat all firearms as if they are ALWAYS loaded.
3. Keep your finger off the trigger and outside of the trigger guard until your sights are aligned on the target and you are ready to fire.
4. Keep your finger off the trigger and outside of the trigger guard while loading or unloading the firearm.
5. Keep your finger off the trigger and outside of the trigger guard while pulling the firearm out of the holster or while returning it to the holster.
6. Be sure of your target and the backstop beyond.
7. NEVER give a firearm to or take a firearm from anyone unless the action is open and the magazine and chamber are free of any ammunition or brass.
8. Be sure that the ammunition you are using is factory loaded, is of the correct caliber for the firearm in which it is to be used, and that it is not damaged in any way.
9. Before firing, remove the magazine from the firearm, lock the action open, make sure the chamber is clear of any ammunition or brass, and check the barrel of the unloaded firearm for any possible obstructions.
10. Before firing any firearm that is unfamiliar to you, make sure that you understand exactly how it functions. A lack of familiarity with the firearm can result in serious injury or death, damage to the firearm or other damage to property. Attend a certified training course on any firearm which you intend to use or with which you are not sufficiently familiar.
11. ALWAYS wear hearing and eye protection when using your firearm.
12. Keep all body parts, including the hands and fingers, away from the muzzle to avoid injury or burns.
13. Be sure that no part of either hand touches or interferes with the slide. The slide is moved backward by the recoil force of the pistol during firing and may cause serious injury.
14. Firearms should be locked and stored separately from ammunition and beyond the reach of children and/or any unauthorized individuals.
15. Alcohol or drugs should NEVER be used before or during use or handling of a firearm.
16. If or when you are taking medication, ALWAYS seek a doctor's advice to be sure you can use and handle your firearm properly and safely.
17. NEVER alter or modify your firearm because alterations or modifications may impair the use of the firearm, including malfunctions or dangerous conditions.
18. Discharging firearms in poorly ventilated areas, cleaning firearms, or handling ammunition may result in exposure to lead; a substance known to be associated with birth defects, reproductive harm and other serious injury. Always have adequate ventilation. Wash hands thoroughly after exposure.

STOP! Know how to clear this pistol before attempting to operate.

Clearing procedures can be found on page 13.

⚠ WARNING: Not all HK products are available to all U.S. states. Please check local laws and regulations before ordering. Heckler & Koch does not warrant that a person may legally purchase, possess, or carry specific items according to federal, state, or local laws.

⚠ WARNING: READ THE INSTRUCTIONS AND WARNINGS IN THIS OPERATOR'S MANUAL CAREFULLY BEFORE USING OR HANDLING THIS FIREARM. A firearm has the capability of taking your life or the life of someone else! Be extremely careful with your firearm. An accident can occur at any time and is almost always the result of not following basic safety rules.

OPERATOR'S MANUAL

P30 SERIES



HECKLER & KOCH

HECKLER & KOCH

5675 Transport Boulevard

Columbus, Georgia 31907 USA

Customer Service: 706-701-5554

USA Website: www.hk-usa.com • Email: cs@heckler-koch-us.com

© Heckler & Koch USA (Heckler & Koch Inc. and Heckler & Koch Defense Inc.) June 2022
All rights reserved, specifications and models subject to change without notice.

⚠ DO NOT DISCARD THIS OPERATOR'S MANUAL. This Operator's Manual should be kept with this firearm and be transferred with this firearm if there is a change in ownership or it is presented to another person.

TABLE OF CONTENTS

Safety Precautions & Clearing	Inside Cover
Section 1 Nomenclature	5
Section 2 Specifications	8
Section 3 Function & Operation	10
Cycle of Operation	10
Safety Features	11
Section 4 Instructions for Use	13
Clearing Procedure	13
Installation of Backstraps and Grip Panels	14
Ammunition	15
Filling & Emptying the Magazine	16
Loading	16
Sights and Aiming	17
Operation	18
Firing	18
Trigger Variants	19
Selection & Use of a Holster	19
Storage & Transport	19
Section 5 Disassembly & Assembly	20
Disassembly	20
Assembly	21
Magazine Disassembly	22
Magazine Assembly	24
Function Check	25
Section 6 Cleaning & Maintenance	26
Cleaning	26
Inspection	27
Lubrication	28
Troubleshooting Problems & Repair	29
Section 7 Lock-Out Device	30
Section 8 P30 Accessories	31
Section 9 Warranty Registration Information	34
Section 10 Parts Lists and Exploded Diagrams	36
Firearms Service Record	42

SECTION 1 NOMENCLATURE

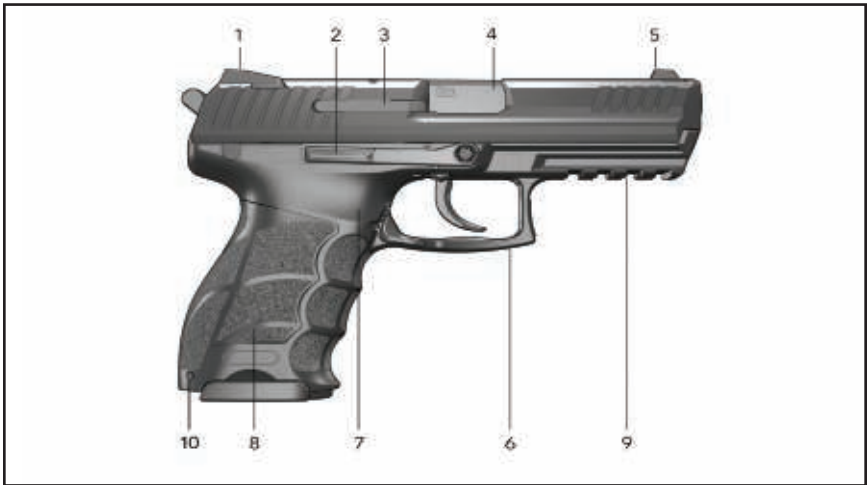


Figure 1 — P30 (right side view)

- | | |
|------------------------|-----------------------------------|
| 1 Rear sight | 6 Trigger guard |
| 2 Slide release, right | 7 Frame |
| 3 Extractor | 8 Grip panel, right |
| 4 Barrel | 9 Serial number |
| 5 Front sight | 10 Lanyard loop (except on P30SK) |

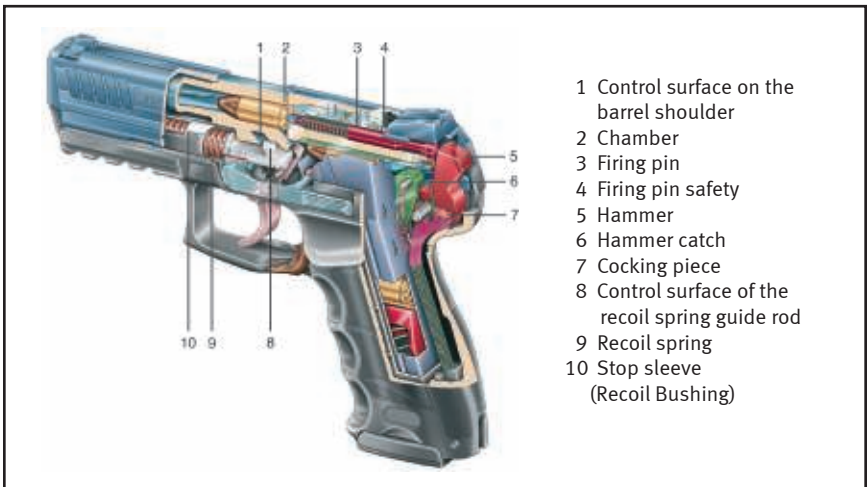


Figure 2 — P30 Cutaway (left side view, P30 LEM variant shown)



Figure 3 — P30L (left side view)

- | | |
|------------------------|-----------------------|
| 1 Slide | 8 Magazine |
| 2 Disassembly notch | 9 Magazine release |
| 3 Slide release, left | 10 Trigger |
| 4 Hammer | 11 Picatinny-rail |
| 5 Decocker (Variant 3) | 12 Follower |
| 6 Backstrap | 13 Magazine lips/body |
| 7 Grip panel, left | |



Figure 4 — P30SK LEM, P30 LEM, P30L LEM (left side view)



Figure 5 — P30SK, P30, P30L (left side view)
V3 DA/SA with decocker on rear of frame



Figure 6 — P30SKS, P30S, L30LS (left side view)
V3 with Safety Levers shown in the “SAFE” positions

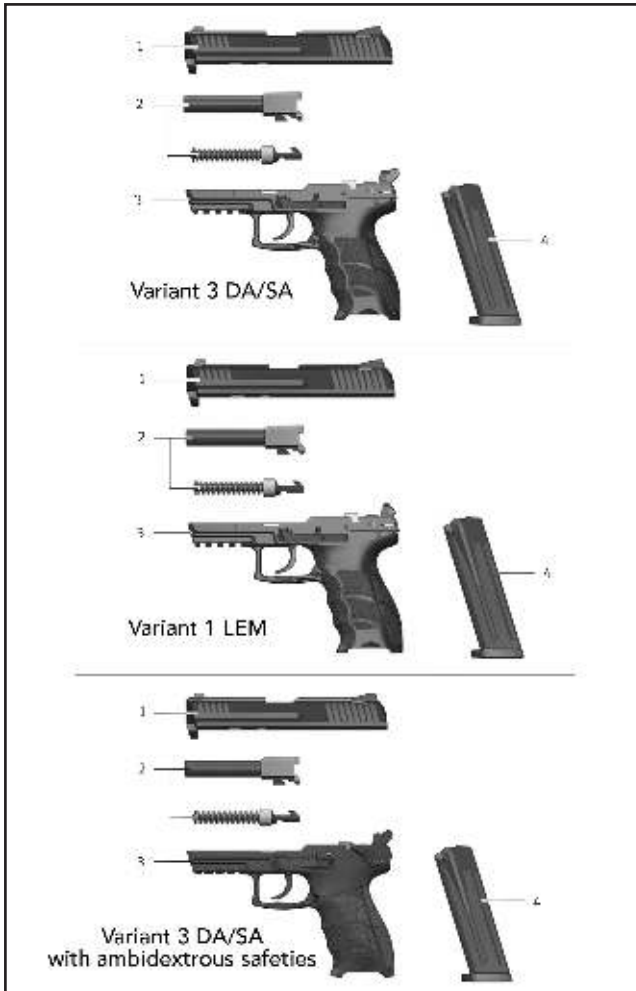


Figure 7 — P30 Assembly Groups (current variant configurations)

1 Slide
2 Barrel with recoil assembly

3 Frame
4 Magazine

SECTION 2 SPECIFICATIONS

P30

Caliber	9 mm x 19 Luger	.40 S&W
Operating Principle	Short recoil, modified	Short recoil, modified
Action Type	Browning type, linkless	Browning type, linkless
Sights	Open rectangular notch rear sight with high contrast front sight (not radioactive)	same as 9mm model
Total Length	181 mm (7.13 in.)	
Barrel Length	98 mm (3.86 in.)	
Barrel Profile	Six-sided polygonal	
Sight Radius	148.5 mm (5.85 in.)	
Twist Length	250 mm (9.84 in.)	
Overall Height (with magazine inserted)	138 mm (5.43 in.)	same as 9 mm model
Overall Width	34.8 mm (1.37 in.)	
Weight (with empty magazine)	739 grams (26.07 oz.)	
Weight of empty magazine	93 grams (3.28 oz.)	
Magazine Capacity	20, 17, 15 or 10 rounds	10 or 13 rounds (.40 S&W)
Safety Features	Ambidextrous Safety Levers (P30S Variants), Decocking Lever (DA/SA V3 Variants), Disconnecter (All Variants), Firing Pin Block (All Variants), Firing Pin Spring (All Variants), Drop Safety (All Variants), Lock Out Device (All Variants)	
Variant 1 (V1)	Light trigger pull, Law Enforcement Modification (LEM) enhanced DAO	
Variant 2 (V2)	Standard trigger pull, Law Enforcement Modification (LEM) enhanced DAO	
Variant 3 (V3)	Double Action/Single Action (DA/SA) with Decocker	
	P30S specifications approximately the same except for additional width (38.46 mm /1.51 in.) and weight (790 grams /27.87 oz.)	

P30L

Caliber	9 mm x 19 Luger	.40 S&W
Operating Principle	Short recoil, modified	Short recoil, modified
Action Type	Browning type, linkless	Browning type, linkless
Sights	Open rectangular notch rear sight with high contrast front sight (not radioactive)	same as 9mm model
Total Length	196 mm (7.72 in.)	
Barrel Length	113 mm (4.45 in.)	
Barrel Profile	Six-sided polygonal	
Sight Radius	163 mm (6.42 in.)	
Twist Length	250 mm (9.84 in.)	
Overall Height (with magazine inserted)	138 mm (5.43 in.)	same as 9mm model
Overall Width	34.8 mm (1.37 in.)	
Weight (with empty magazine)	780 grams (27.51 oz.)	
Weight of empty magazine	93 grams (3.28 oz.)	
Magazine Capacity	20, 17, 15 or 10 rounds	10 or 13 rounds (.40 S&W)
Safety Features	Ambidextrous Safety Levers (P30LS Variants), Decocking Lever (DA/SA V3 Variants), Disconnecter (All Variants), Firing Pin Block (All Variants), Firing Pin Spring (All Variants), Drop Safety (All Variants), Lock Out Device (All Variants)	
Variant 1 (V1)	Light trigger pull, Law Enforcement Modification (LEM) enhanced DAO	
Variant 2 (V2)	Standard trigger pull, Law Enforcement Modification (LEM) enhanced DAO	
Variant 3 (V3)	Double Action/Single Action (DA/SA) with Decocker	
	P30LS specifications approximately the same except for additional width (38.46 mm / 1.51 in.) and weight (830 grams /29.28 oz.)	

P30SK

Caliber	9 mm x 19 Luger
Operating Principle	Short recoil, modified
Action Type	Browning type, linkless

Sights	Open rectangular notch rear sight with high contrast front sight (not radioactive)
--------	--

Total Length	163 mm (6.42 in.)
Barrel Length	83 mm (3.27 in.)
Barrel Profile	Six-sided polygonal
Sight Radius	136 mm (5.35 in.)
Twist Length	250 mm (9.84 in.)

Overall Height (with magazine inserted)	116 mm (4.57 in.)
Overall Width	34.8 mm (1.37 in.)
Weight (with empty magazine)	680 grams (23.99 oz.)
Weight of empty magazine	82 grams (2.89 oz.)

Magazine Capacity	20, 17, 15, 13 or 10 rounds
Safety Features	Ambidextrous Safety Levers (P30SKS Variants), Decocking Lever (DA/SA V3 Variants), Disconnecter (All Variants), Firing Pin Block (All Variants), Firing Pin Spring (All Variants), Drop Safety (All Variants), Lock Out Device (All Variants)

Variant 1 (V1)	Light trigger pull, Law Enforcement Modification (LEM) enhanced DAO
Variant 2 (V2)	Standard trigger pull, Law Enforcement Modification (LEM) enhanced DAO
Variant 3 (V3)	Double Action/Single Action (DA/SA) with Decocker

P30SKS specifications approximately the same except for additional width (38.46 mm / 1.51 in.) and weight (708 grams 24.97 oz.)

Trigger Pull (all models)

	Newtons (approx.)	Pounds (approx.)
Variant 1 (V1)	18 N - 27 N	4.05 - 6.07
Variant 2 (V2)	27 N - 35 N	6.07 - 7.89
Variant 3 (V3)	18 N - 27 N (56N after decock)	4.05 - 6.07 (12.59 after decock)

CYCLE OF OPERATION

The cycle of operation is a reoccurring sequence of mechanical events which takes place in the operation of a self-loading firearm. The sequence for the P30 pistol begins with a loaded magazine inserted into the magazine well with the slide locked back to the rear.

1. Feeding: Removal of a round from the magazine

Depressing either side of the ambidextrous slide release or pulling slightly back on the slide serrations allows the recoil spring to expand, driving the slide forward. The feed pawl, an extrusion that is located on the bottom of the slide, passes between the feed lips of the magazine housing, striking the top cartridge, and pushing it towards the chamber. The bullet then contacts the barrel feed ramp, allowing the base of the cartridge to pivot upwards on the slide breech face.

2. Chambering: Placing and seating the round into the chamber of the barrel

The recoil spring continues to expand, driving the slide forward and the slide positions the cartridge into the chamber. The base of the cartridge continues to pivot upwards as the slide mounted extractor engages the cartridge extractor rim. Chambering is complete by the time the barrel starts to move when the slide comes in contact with the back of the barrel locking block and starts to pivot the barrel upwards and forward.

3. Locking: Closing and locking of the breech mechanism prior to the shot

As the slide is moving forward, the slide breech face contacts the extension on the back of the barrel locking block and thus pivots the barrel upward until the stepped forward edge of the barrel locking block engages the forward edge of ejection port. As the slide locks into position, the frame mounted disconnector is allowed to pivot upwards into a corresponding relief cut milled on the inside of the slide, thus allowing the trigger bar access to the sear release catch. The locking phase is complete when the slide reaches its limit of forward travel.

4. Firing: Ignition of the cartridge primer and propellant

As the operator pulls the trigger, the trigger bar moves forward and contacts the control lever. The front of the control lever pivots upwards on the sear axle, allowing the tip of the control lever to depress the firing pin safety on the slide. The hammer catch, mounted on side of the control lever, pivots upwards as well. The hook on the bottom of the hammer catch engages the roll pin on the bottom of the sear, thus disengaging the hammer (DA/SA variant) or cocking piece (LEM variant) from the sear and allowing the hammer strut spring to pivot the hammer forward with enough energy to strike the firing pin and overcome the force of the firing pin spring. The tip of the firing pin then contacts and dents the primer. The primer detonates which, in turn, ignites the propellant. The projectile, separated from the cartridge case, is forced down the barrel by the expanding gases and is stabilized by the polygonal rifling located inside the barrel.

5. Unlocking: Removal of any blocking mechanism to allow the opening of the breech

The resultant force of the cartridge firing produces an impact on the slide and barrel, initially pushing both the slide and barrel back in unison. The slide ejection port pushes back on the barrel locking block and after approximately 3.9 millimeters of travel, the barrel pivots downward until the barrel angular locking surface engages the contact surface on the recoil spring guide rod.

6. Extracting: Removal of the fired cartridge case or live round from the chamber

With the barrel now retained by the locking block, the slide continues to move towards the rear. The extractor pulls the fired cartridge case or live round from the chamber.

7. Ejecting: Expulsion of the fired cartridge case or live round from the firearm

The extractor engages the cartridge case extractor rim as the slide travels to the rear. The

extractor creates a pivot and the frame mounted ejector creates a contact point. As the slide rakes the cartridge case against the ejector, the ejector pushes the cartridge case out through the ejection port.

8. Cocking: Accomplished when the slide rotates the hammer rearward.

The hammer (V3) or cocking piece (V1/2) rotates on the hammer axle until engaged by the sear. A frame mounted leaf spring applies pressure to the sear forcing it to connect with the hammer or cocking piece.

SAFETY FEATURES — The P30 Series incorporates the following safety features:

1. Ambidextrous Safety Levers (P30S, P30LS, & P30SKS Variants)

When activated, the ambidextrous safety levers block the upward movement of the working parts and prevent the weapon from firing. When set on “safe” (Figure 8), the hammer axle, attached to the right-hand safety lever, blocks the upward movement of the control lever. With the movement of the control lever blocked, the hammer catch is unable to pivot upwards and push off the roll pin mounted on the bottom of the sear. The sear is then unable to disengage from the hammer and the hammer is therefore unable to strike the firing pin. When set on “fire” (Figure 9), an angled portion of the hammer axle pivots and allows the hook on the back of the control lever to pivot downwards while simultaneously moving the hammer catch. The hammer catch disengages the roll pin at the bottom of the sear and sear separates from the hammer, allowing the hammer strut spring to propel the hammer upwards to strike the firing pin.



Figure 8
Safety lever on (engaged)



Figure 9
Safety lever in FIRE position

2. Decocking Lever (DA/SA V3 Variants)

The decocking lever allows the operator to safely reposition the hammer from the single action mode to the double action mode. The decocking lever, which extends out the back of the frame, is affixed directly to the sear. Pushing the decocking lever disengages the sear from the hammer. The hammer, upon being released from the sear, swings upward until it is blocked by the back of hammer catch.

3. Disconnecter (All Variants)

The disconnecter ensures the weapon will fire only when the slide is completely in battery. When the slide is out of battery, the solid portion of the bottom of the slide presses down on the disconnecter, overcoming the force of the trigger bar detent and spring. The lug on the back of the trigger bar is then taken out of engagement with the control lever and hammer, precluding the weapon from firing. When the slide is completely in battery, the trigger bar detent and spring press upward on the trigger bar allowing the lug on the back of the trigger bar to engage the control lever and hammer. A relief cut, located on the bottom of the slide, allows the top of the disconnecter to pivot upwards. This action allows the trigger bar to engage and move the control lever upwards when the trigger is pulled and initiate the firing sequence.

4. Firing Pin Safety (All Variants)

The firing pin safety ensures that the firing pin is held stationary unless the trigger is pulled. It helps prevent accidental discharge if the firearm is dropped or mishandled. When the trigger is pulled, the trigger bar moves forward. A lug on the back of the trigger bar pivots the control lever upwards. The tip of the lever engages the bottom of the firing pin safety, located on the bottom of the slide, and overcomes the force of the firing pin safety spring. The firing pin safety is pushed upwards into the slide, allowing the firing pin to be pushed forward when struck by the hammer. If the trigger is not pulled, the firing pin safety spring pushes down on the firing pin safety, which in turn, prevents the forward movement of the firing pin.

5. Firing Pin Spring (All Variants)

The spring constantly presses upon the firing pin to help eliminate the possibility of the firing pin striking the primer when the slide goes into battery, either by chambering the first round or by subsequently shooting the firearm. Pulling the trigger releases the hammer, which swings forward with enough energy to overcome the force of the firing pin spring when striking the back of the firing pin.

6. Drop Safety (All Variants)

The drop safety tang on the back of the hammer catch blocks the forward movement of the hammer unless the trigger is pulled. When the trigger is pulled, the trigger bar moves forward and pivots the control lever and the hammer catch. As the hammer catch pivots, the sear releases the hammer (DA/SA variants) or the cocking piece (LEM variants), allowing the hammer to swing forward and strike the back of the firing pin. As the hammer catch pivots, the tang pivots downward into a relief cut on the right-hand side of the hammer. When the trigger is not pulled or the decocking lever is pushed forward, the tang on the hammer catch rides above the relief cut on the hammer, thus blocking the hammer from striking the firing pin.

7. Lock Out Device (All Variants)

When activated, the lock out device blocks the downward movement of the hammer strut which then precludes the forward movement of the hammer. The lock out device is mounted in the grip insert. The lock out device feature is engaged by inserting the two pronged key into the insert and rotating the gun lock clockwise. This action pivots the gun lock and blocks the downward movement of the hammer strut. With hammer strut frozen by the lock out device, the hammer is unable to cock, and the trigger bar is unable to move forward. When the lock out device feature is disengaged, a channel in the gun lock allows the hammer strut to pivot downward when the slide passes over the hammer or when the trigger is pulled.



CLEARING PROCEDURE

- 1. Set the Safety Lever to safe. (if applicable)** Ensure the safety lever is engaged.
- 2. Point the muzzle of the P30 pistol in a safe direction.** Ensure the muzzle of the P30 is pointed in a safe direction and that the operator's finger is off the trigger and outside the trigger guard.
- 3. Remove the magazine.** Depress either side of the ambidextrous magazine release. Remove the magazine from the magazine well.
- 4. Open and lock the slide to the rear.** Grasping the rear serrations, rack the slide to the rear while keeping the muzzle pointed in a safe direction. Push upwards on either side of the ambidextrous slide release and lock the slide to the rear. Watch for a cartridge or empty case to be ejected out through the ejection port.



Figure 10 — Clearing the P30 pistol

5. Inspect the chamber.

Inspect the chamber for the presence of a cartridge or empty case by:

1. Visually inspecting the chamber through the open ejection port.
2. Insert a finger through the ejection port and sweep the chamber and feed ramp area.
3. Removing any cartridges or empty cases from the chamber or from within the P30.



INSTALLATION OF THE BACKSTRAP AND GRIP SIDE PANELS

1. Using a 2.8 mm (or 7/64") pin punch, remove the pin holding the backstrap in position.
Choose the combination of backstrap and grip panels that provide the most comfortable fit for the operator (see Figure 11).



Figure 11
Installing backstrap
and grip panels



Figure 12
Push the grip panels forward
onto the guide rails on the frame

2. Install the two grooves on the inside of each grip panel onto the corresponding guide rails located on the outside of the frame (see Figure 12) and push the panels forward until they seat flush into the frame.
3. Seat the backstrap onto the back of the frame and push upwards until the mounting surface for the pin on the backstrap aligns with the mounting surface for the pin on the frame.
4. Drift the pin into position with a pin punch to capture the backstrap to the frame.

AMMUNITION



HK P30 pistols are designed to fire quality, factory-loaded ammunition loaded to NATO, SAAMI (Sporting Arms and Ammunition Manufacturers' Institute), or CIP (Permanent International Commission for the Proof of Small Arms) specifications for use specifically in handguns.

The following guidelines should be considered when selecting the correct ammunition for your pistol:

1. Be sure the ammunition you have chosen is compatible with your pistol: proper caliber, cartridge, bullet weight, etc. Caliber markings on P30 pistols appear on the barrel locking block, visible through the ejection port on the right side of the slide.
2. Prior to loading the magazine and chamber, carefully inspect all cartridges for any abnormalities, including, but not limited to:
 - Cracked, split, dirty, or corroded cases
 - Improperly seated projectiles and/or primers
 - Damaged projectiles
3. Do not attempt to fire a cartridge in which the projectile has been forced back into the case. Upon firing, this condition may result in increased chamber pressure above safe limits.
4. Do not fire ammunition through a pistol that:
 - Is military surplus
 - Is assembled with corrosive primer and/or propellant
 - Is exposed to oil, grease, water or direct sunlight. If possible, remove contaminants before use and cool down ammunition exposed to direct sunlight or heat. (Exposure to sources of heat could raise the chamber pressure of the cartridge above safe limits).
 - Is loaded specifically for use in submachine guns
 - Is rated as +P+



FILLING AND EMPTYING THE MAGAZINE



Filling the Magazine

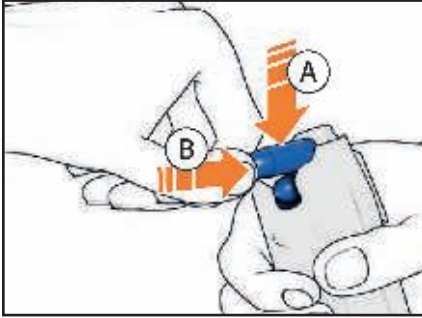


Figure 13 – Loading the magazine

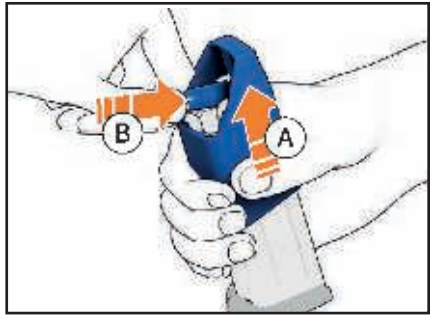


Figure 14 – Loading the magazine
(with magazine loader)

1. Hold the magazine in the non-firing hand with the back side of the magazine resting against the palm.
2. Using the firing hand, hold a cartridge between the index finger and thumb with the projectile facing the palm.
3. Press the rim of the cartridge down against the forward edge of the magazine follower or on the top cartridge already in the magazine.
4. Slide the cartridge back into the magazine under the feed lips.
5. Repeat steps 1-4 until the magazine is full. The viewing holes in the back of the magazine allow the operator to confirm the number of cartridges present within the magazine.

Emptying the Magazine - Exert pressure with a finger on the rim of the cartridge and push each cartridge forward out of the magazine one at a time until the magazine is empty.

LOADING



Administrative Loading - Used to initially load the pistol before it is to be fired.

Slide rearward or forward, chamber empty.

1. Make sure fingers are outside of the trigger guard and the pistol is always pointed in a safe direction.
2. Insert magazine - Insert the magazine firmly into the frame. Tug on the magazine floorplate to ensure that it is fully seated and engaged.
3. Chamber a cartridge - If the slide is forward, pull it fully to the rear and release it. If the slide is rearward, depress either side of the slide release. Do not ride the slide forward. Let it go forward from the force of the recoil spring.

SIGHTS AND AIMING

The P30 is equipped with a three-dot sighting system, like those first introduced by HK on the P7 series pistol in the 1970s. The sights are adjustable for windage by drifting. Sights are installed and aligned by HK technicians at the factory. Figure 17 shows correct sight alignment, generally for the P30 series it is a “US Center” hold. Figure 18 shows common sight errors.



Figure 15— Adjusting front sight by lateral shifting



Figure 16 — Adjusting rear sight by lateral shifting

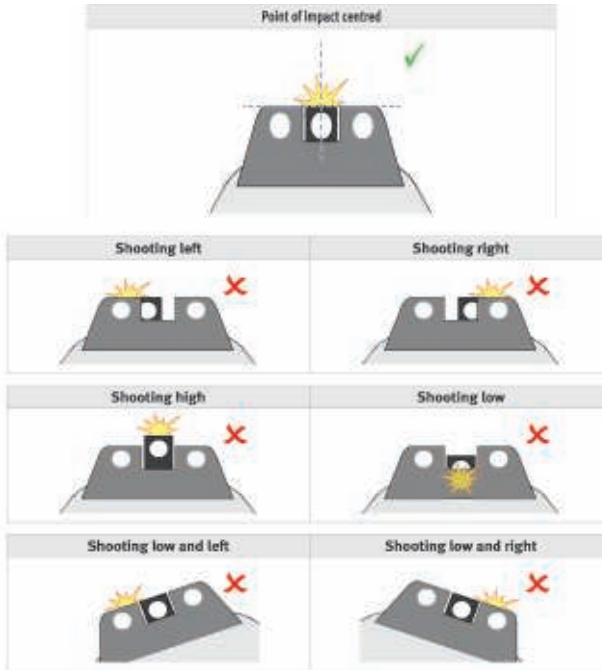


Figure 18 – Common sight alignment errors

FIRING



1. Acquire the proper sight alignment and sight picture (see Figure 19).
2. Control breathing.
3. Gradually squeeze the trigger straight to the rear while attempting to avoid disruption to the sight picture and alignment.
4. Practice good follow-through techniques by maintaining proper sight picture and trigger squeeze until after the firearm has discharged and cycled fully.

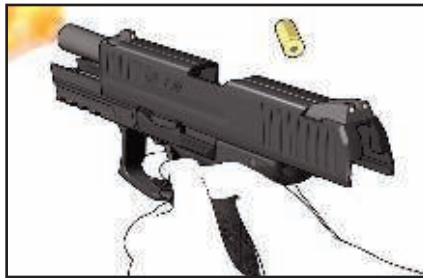


Figure 19 — Two-handed grip

TRIGGER VARIANTS

P30 Series pistols with a Law Enforcement Modification (LEM) enhanced Double Action Only trigger mode (V1 and V2) are partially cocked after a round is chambered or after a round is fired. This results in a constant trigger pull (Figure 20).

P30 models with the Double Action/Single Action (DA/SA) trigger mode (Figure 21) are cocked after a round is chambered or after a round is fired. This results in a light trigger pull. If a cocked pistol is decocked using the decocking lever, then the trigger pull becomes heavier because the weapon has to be fired in Double Action mode on the next round. Alternatively, the weapon can also be cocked again manually.

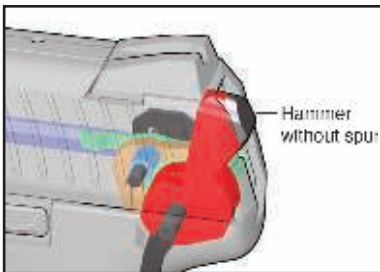


Figure 20 — LEM firing mode

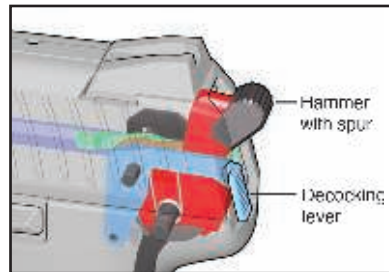


Figure 21 — V3 DA/SA firing mode

SELECTION AND USE OF A HOLSTER

Selection - When selecting a holster for the P30 pistol, it is important to consider the following points:

1. The holster must not make contact with any of the operating controls. This includes the slide release, magazine release, and the trigger. The design of the holster must also not actuate these controls when the pistol is carried in, drawn from, or returned to the holster.
2. The holster should not cause the slide to move (unlock) when the pistol is returned to the holster.
3. Accommodations must be provided in the holster for any accessories that might be present on the pistol.
4. Choose a holster designed specifically for a P30 pistol. Holsters are available for purchase at us.hkwebshop.com. A list of holster manufacturers can be found at www.hk-usa.com or by contacting HK Customer Service 706-701-5554.

Returning the pistol to the holster - The P30 pistol must be returned to the holster in a safe manner, ensuring there is no obstruction or material that could enter the trigger guard.



STORAGE AND TRANSPORT

1. Store or transport the pistol and its components clean and lubricated.
2. Store and transport the pistol without cartridges in the chamber, magazine, or in the storage container with magazine removed.
3. Store and transport the pistol with the slide forward.
4. Clean and lubricate the pistol and its components at least every twelve (12) months during storage.
5. HK recommends storage in a climate controlled, room temperature environment.
6. Store the pistol and ammunition separately under lock and key.

DISASSEMBLY

1. Make sure the pistol is CLEAR. (see Section 4)
2. With the magazine removed, pull the slide (A) all the way back and hold it there (see Figure 22).
3. Push the slide release (B) upwards to lock slide back.

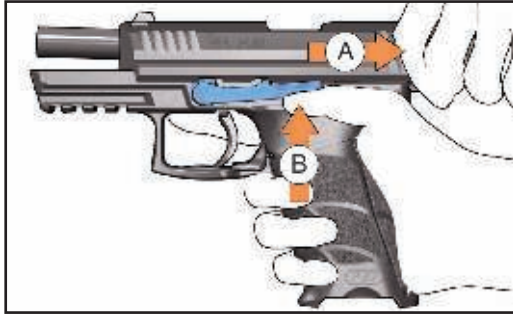


Figure 22 — Pull the slide back and lock it



Figure 23 — Removing slide from frame by pushing it forward

4. Hold the pistol so that your thumb covers the rear of the frame and your fingers rest on the top of the slide.
5. Pull slide back and move it to the rear as far as the disassembly position (Figure 23).
6. Using your free hand, press the slide release axle in from right to left (Figure 23).
7. Pull the slide release to the left until it reaches the locking position. A red painted area on the top of the part will be exposed, indicating the part is in its outermost position. Pull the slide forward off the pistol's frame (Figure 24).
8. Turn the slide upside down and carefully push the recoil spring forward and out to either the left or right side, separating the recoil spring from the barrel and slide (see Figure 25).
9. Pivot the barrel slightly forward and press upward on the barrel through the ejection port, separating the barrel from the slide.

Note: The left hand slide release is captured by the slide when the pistol is assembled. It cannot be completely removed from the frame during field stripping. It is retained by right leg of the trigger spring.



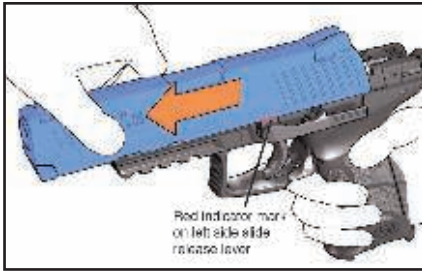


Figure 24 — Removing the slide

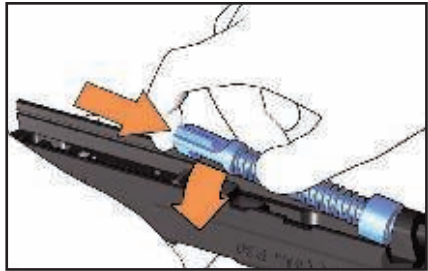


Figure 25 — Removing the recoil spring

ASSEMBLY

1. Turn the slide upside down and insert the barrel into the slide with the barrel angular camming surface facing upwards.
2. Pivot the barrel back towards the rear until the barrel locking block snaps into the slide ejection port.
3. Insert the front of the recoil spring into the tang on the slide that extends above the muzzle.
4. Push the recoil spring forward into position, compressing the recoil spring, then pivot the back of the recoil spring guide rod onto the stepped mounting surface located on the front of the barrel camming lug (see Figure 26). Ensure the front of the recoil spring is facing forward in the slide.

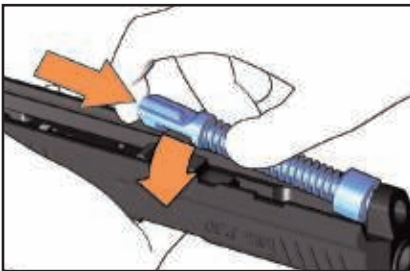


Figure 26 — Reassembling the recoil spring onto the barrel and side

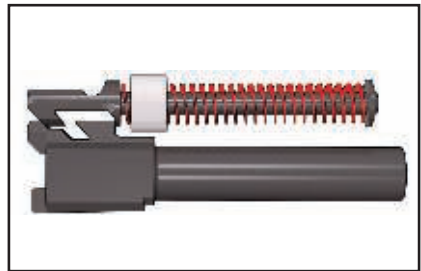


Figure 27 — Relationship of barrel to recoil spring assembly

5. Ensure that no magazine is present in the magazine well and that the left slide release is in the outward or locked position.
6. Mount the slide onto the frame, ensuring that the recoil spring is centered underneath the barrel, and that the rails on the frame are inserted into the grooves in the bottom of the slide (see Figure 28).

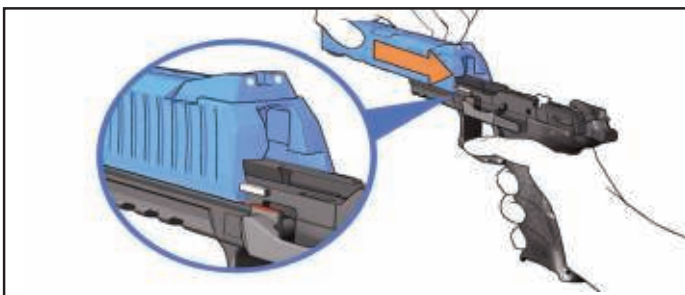


Figure 28 — Mounting the slide on the frame

7. Pull slide back as far as the disassembly (notch) position and hold it there.
8. Press slide release into the frame from the left.
9. Perform a FUNCTION CHECK (page 26).



MAGAZINE DISASSEMBLY



Figure 29
17, 15, 13, and 10-
round magazines



Figure 30
Depressing
locking plate in floorplate



Figure 31
Slide the floorplate
forward



Disassembly of high-capacity magazines

1. Using a punch, depress the locking plate located in the floorplate and hold it there. (see Figure 30).
2. Place a portion of either hand over the base of the magazine to control the release of the spring and locking plate.
3. Slowly slide the floorplate forward off the magazine housing (see Figure 31).
4. Gradually allow the locking plate and spring to expand out of the magazine housing (see Figure 32).
5. Remove the locking plate, magazine spring, and follower from the magazine housing.

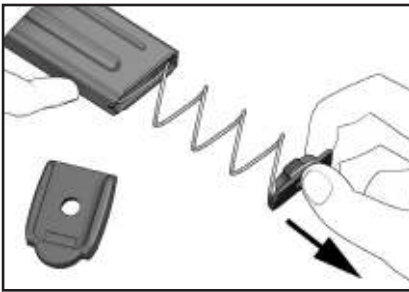


Figure 32
Removing locking plate and spring

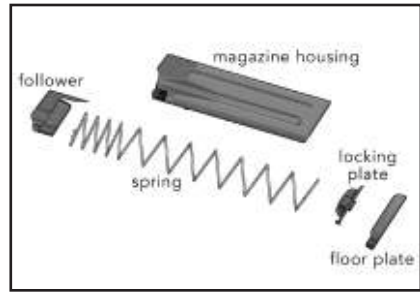


Figure 33
15-round magazine components

Disassembly of 10-round magazine

1. Using a punch, depress the locking plate located in the floorplate and hold it there (see Figure 34).
2. Place a portion of either hand over the base of the magazine to control the release of the spring and locking plate.
3. With the locking plate still depressed, squeeze the locking tabs located on the right and left sides of the floorplate (see Figure 35).

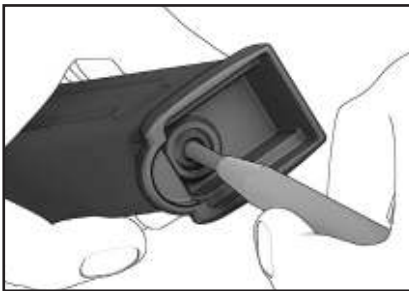


Figure 34
Depress locking plate

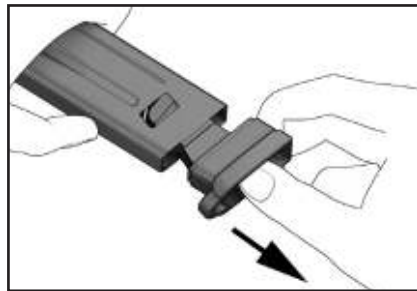


Figure 35
Releasing magazine components

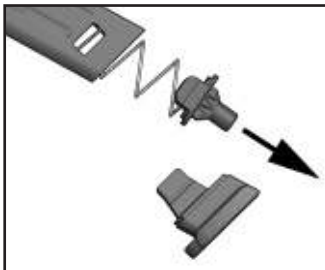


Figure 36
Removing the locking floor plate
and spring

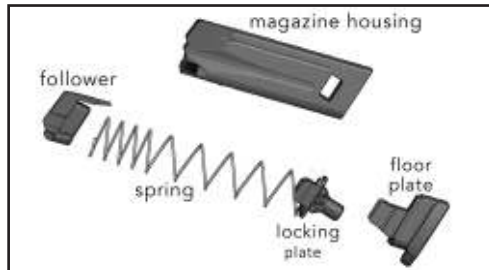


Figure 37
10-round magazine components

4. Gradually allow the locking plate and magazine spring to expand out of the magazine body (see Figure 36).
5. Remove the locking plate, magazine spring, and magazine follower from the magazine body. Figure 37 shows all the magazine components for 10-round magazines.

MAGAZINE ASSEMBLY

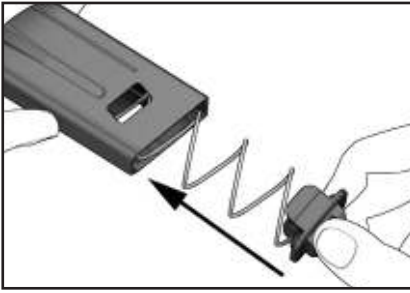


Figure 38
Insert the follower, spring, and locking floor plate

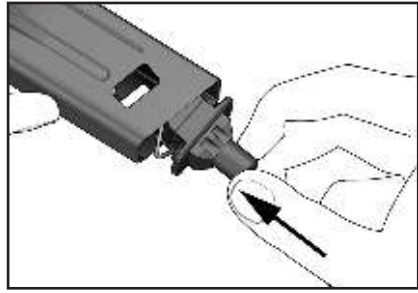


Figure 39
Push the locking plate above the cutouts

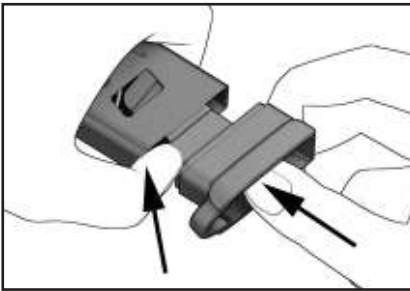


Figure 40
Insert the floorplate into the magazine body

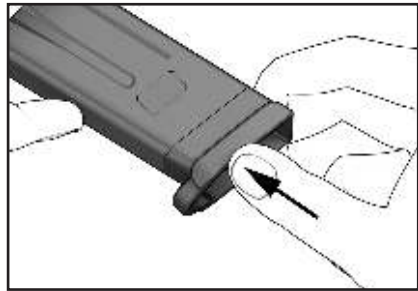


Figure 41
Ensure the tabs on the floorplate seat onto the cutouts

1. Place the magazine follower onto the magazine spring with the end of the spring positioned on the left of the follower.
2. Insert the follower and magazine spring into the magazine housing as depicted in Figure 38.
3. Place the locking plate (locking insert) onto the protruding end of the magazine spring so that the rounded corners face toward the front of the magazine.
4. Push the locking plate into the magazine housing against the pressure of the magazine spring and hold it there. (Figure 39)
5. On 10-round magazines, push the floorplate up onto the base of the magazine housing until the locking tabs engage in the sides of the housing. (Figure 40)
6. Check to see if the locking tabs on the floorplate are securely locked into the housing and the locking plate fits within the hole in the floorplate. (Figure 41)

On all magazines, check the magazine for proper assembly by ensuring that the follower slides up and down freely within the magazine body and with spring force. Also check that the follower rises within the magazine body to be nearly flush against the bottom of the feed lips.



FUNCTION CHECK

It is essential that a function check be performed on the P30 pistol after reassembly to ensure that the firearm's components have been correctly installed.

LEM:

1. Ensure the P30 is CLEAR by performing a "Clearing Procedure" in Section 4.
2. Ensure magazine is removed from the frame and rack the slide in quick succession about three to four times; the slide, although under tension from the recoil spring, should smoothly move back and forth on the frame without binding or locking. Return the slide forward (in battery).
3. With an unloaded P30 and the muzzle in a safe direction, pull the trigger and dry fire the P30. The hammer shell should pivot forward to contact the firing pin. Continue to hold the trigger back to the rear and rack the slide and release. Release the trigger and allow the hammer shell to reset in the LEM mode.
4. Pull the trigger again and the hammer shell should pivot forward and strike the firing pin.
5. With the slide forward seated in battery, insert an empty magazine in the magazine well. Pull back the slide and the slide should lock to the rear on an empty chamber. Push downward on either the left or right slide catch and the slide should return to battery (fully seated forward).

DA/SA (with Decocker):

1. Ensure the P30 is CLEAR by performing a "Clearing Procedure" in Section 4.
2. Ensure magazine is removed from the frame and rack the slide in quick succession about three to four times; the slide, although under tension from the recoil spring, should smoothly move back and forth on the frame without binding or locking. Return the slide forward (in battery).
3. With an unloaded P30 and the muzzle in a safe direction, pull the trigger and dry fire the P30. The spurred hammer should pivot forward to contact the firing pin. Continue to hold the trigger back to the rear and rack the slide and release. Release the trigger and allow the spurred hammer to reset in the cocked single action (SA) mode.
4. Depress the decocking button on the left side of the frame next to the hammer. The spurred hammer should pivot forward but must not contact the firing pin. The spurred hammer is now in the double action (DA) mode. Pull the trigger again and the spurred hammer should pivot forward and strike the firing pin.

Contact the Heckler & Koch Customer Service Department at 706-701-5554 or by email at cs@heckler-koch-us.com if you encounter any problems in attempting to disassemble, assemble, and/or conduct a function check on the P30 pistol

CLEANING



Materials Required - At a minimum, HK suggests the following materials to properly clean a P30 Series pistol:

- Cleaning rod with handle and patch holder
- Nylon toothbrush
- Bronze bristle bore brush (in the appropriate caliber)
- Cleaning patches (in the appropriate caliber)
- Lint-free wiping rag
- Cleaning solution/lubricant
- Cotton swabs



Handgun cleaning kits are available from HK for thorough cleaning of pistols and other firearms. Visit the HK-USA webshop at www.hkwebshop.com or contact HK Customer Service.

Cleaning Intervals - Normal and Major are the two types of operator cleaning for the P30 pistol.

Normal Cleaning - Performed after each firing or every twelve (12) months, whichever comes first.

Major Cleaning - Often referred to as “detailed cleaning.” Performed after the firing of 500 cartridges or when the pistol is exposed to, or laden with:

- sand
- dust
- water (especially saltwater)
- other visible contaminants or foreign matter.

Normal Cleaning



Slide -

- Gently scrub all internal surfaces of the slide using the nylon toothbrush moistened with solvent.
- Remove all loose fouling from all surfaces of the slide using a rag and cotton swabs.

Recoil spring assembly -

- Remove all visible fouling using solvent, a nylon toothbrush or a rag and cotton swabs.

Barrel (with locking block) -

- Moisten a bronze bore brush with solvent and scrub the bore from chamber to muzzle at least six (6) passes, back and forth.
- Remove the loose fouling from the bore using cleaning patches.
- Gently scrub the exterior of the barrel and locking block with the nylon toothbrush moistened with solvent.
- Remove all loose fouling from the exterior of the barrel using a rag and cotton swabs.

Frame -

- Gently scrub surfaces where carbon fouling is present using the nylon toothbrush moistened with solvent. Concentrate on the area normally covered by the slide.
- Remove all loose fouling from all areas of the frame using a rag and cotton swabs.

Magazine -

- Gently scrub the top of the magazine, concentrating on the follower and feed lips, using the nylon toothbrush moistened with solvent.
- Remove all loose fouling from all surfaces of the magazine using a rag and cotton swabs.

Major Cleaning - Major Cleaning is the same as normal cleaning except that:

- The magazine is disassembled for cleaning.
 - All parts should be rinsed with or immersed in solvent and thoroughly scrubbed with a nylon brush. The parts can then be dried using compressed air or with a rag and cotton swabs.
-



INSPECTION

During and after cleaning, visually inspect the pistol and its components for any irregularities that may cause problems or stoppages during operation. Generally, you should keep a watchful eye out for the discrepancies listed below.

Always clear the pistol before conducting your inspection!

Check for:

- Damaged or missing parts
 - Improper assembly or function
 - Absence of free movement, where applicable
 - Absence of spring force, where applicable
 - Unaccustomed looseness
 - Parts exhibiting signs of cracks, burrs, dents, or obvious signs of damage or stress
 - Presence of stops or tactile clicks, where applicable
 - General overall cleanliness
 - Presence of sufficient lubrication
 - Presence of corrosion or degradation of surface finish
-



LUBRICATION



Figure 42 — Lubrications Points (in red)

The surfaces of the P30 pistol are treated with corrosion- and wear-resistant finishes. These surface treatments do not completely reduce the friction between moving parts, and it is recommended that a lubricant be applied to the pistol to ensure proper functioning. Any type of high-quality, medium-weight lubricant (oil) specifically designed for use on firearms will work well on a P30 pistol. Do not use lubricants that boast of their ability to penetrate metal as these substances may deaden primers. Figure 42 shows areas on the pistol requiring particular attention to lubrication.

Where and How Much -

No Lube - Surface is dry and not slippery to the touch.

- All plastic and rubber components
- Ammunition
- Electronics (lights and optics)

Light Lube - A finger run across the surface yields little or no lube.

- Exterior of barrel
- All metal parts
- All internal parts in slide and frame
- Magazine spring
- Recoil spring assembly
- P30 pistol metal magazine housing, where applicable

Medium Lube - A finger run across the surface yields some lube, but lube does not run down surface when it is held in a vertical position.

- Barrel locking block
- Slide rails and grooves
- All operating controls
- Frame guide rails
- Extractor
- Firing Pin Safety

Heavy Lube - Lubrication runs down the surface when it is held in a vertical position.

No heavy lube is required on P30 pistols.

Re-apply lubricant periodically during firing as it burns off from the heat. Apply lubricant using a cleaning brush, cotton swabs, patches, or a rag. A spray bottle of lubricant also works well when using compressed air to circulate the lubricant into all parts and to remove the excess from the pistol.

TROUBLESHOOTING PROBLEMS AND REPAIR

Common causes of problems that are often overlooked include:

- Fouled or improperly lubricated pistol
- Bad ammunition
- Damaged magazines
- Operator error

If your P30 pistol still fails to function, please contact HK Customer Service at 706-701-5554. Law enforcement users, contact your unit armorer or HK Customer Service.

NOTE: If after reviewing this manual you still have questions, please contact HK Customer Service at 706-701-5554 or by email: cs@heckler-koch-us.com.

SECTION 7 LOCK-OUT DEVICE

P30 Series pistols are equipped with a patented HK Lock-Out™ device. This component is located inside the magazine well, in the bottom of the frame. When engaged, it locks the pistol's action by blocking any movement of the trigger, the hammer, and the slide. The pistol is locked and cannot fire until unlocked. The Lock-Out control plate is accessible through the pistol's magazine well (see Figure 43).



Figure 43

Turning the key clockwise 1/4 turn locks the action, turning it counter-clockwise unlocks the action.

Clear the pistol and dry fire it prior to activating the Lock-Out device. Use the two pronged key supplied with the pistol to lock or unlock the pistol as desired. When the holes on the Lock-Out device are horizontally positioned, the pistol is locked and cannot be fired (see Figure 44).



Figure 44
Locked position



Figure 45
Unlocked/fire position

When the holes on the Lock-Out device are vertically positioned, the pistol is unlocked and can be fired (see Figure 45).



For more information contact HK Customer Service.



RAIL MOUNTED ACCESSORIES

All P30, P30L, and P30SK models have MIL-STD-1913 (Picatinny) rails molded into the front, lower portion of their frame (dust cover). This rail allows the operator to mount a wide variety of lights, lasers aimers, and additional accessories to the handgun by means of the simple and proven Picatinny interface system (see Figure 46, 47, 48).



Figure 46 — Accessory weapon light mounted on P30



Figure 47 — Accessory weapon light mounted on P30SK

To avoid damage to the accessory and the P30 pistol, carefully follow the instructions of the manufacturer for installing, operating, and removing accessories from the mounting rails. Always ensure the P30 pistol is “clear” and unloaded before installing or removing accessories. Clearing procedures can be found in Section 4.



Most lights, laser aimers, and similar accessories are installed by sliding them onto the front of the rail system while depressing a locking mechanism or clipping them on from the bottom. Again, follow the installation instructions of the accessory manufacturer. If encountering difficulty, please contact HK Customer Service at 706-701-5554 to avoid damage to the pistol or the accessory.



Figure 48 — Installing accessory onto the rails



Threaded barrels (9 mm only) are available for the service-sized 9 mm P30 and 9 mm long slide P30L. They can be easily installed in P30, P30S, P30L, and P30LS models. These barrels will not fit P30SK models.



Figure 49

*P30 - 4.4 IN M13.5x1 LH Thread (HK ID# 234391)
P30L - 5 IN M13.5x1mm LH thread (HK ID# 229792)*

MAGAZINE LOADER AND OTHER ACCESSORIES

An HK pistol magazine loader is also available as an accessory. The magazine loader (HK article number 217 830) makes loading of all P30 magazines easier and more convenient. Different capacity P30 magazines are also available, as are various sights, including tritium night sights.



Figure 50 — HK magazine loader for the P30

HOLSTERS

Several major holster manufacturers make holsters and magazine carry pouches especially for HK P30 Series pistols. Contact the holster manufacturers for specific information on the style, model, and pricing of P30 holsters.

A partial list of holster manufacturers that make models that accommodate P30 Series pistols follows and is available on the HK-USA webshop us.hkwebshop.com

Aker International, Inc.
2248 Main St., Suite 6
Chula Vista, Ca 91911
(619) 423-5182 or (800) 645-2537
www.akerleather.com

Blackhawk
6160 Commander Parkway
Norfolk, VA 23502
(757) 436-3101
www.blackhawk.com

Blade-Tech Industries
5530 184th St E, Suite A
Puyallup, WA 98375
(253) 655-8059
www.blade-tech.com

Bianchi
3120 E. Mission Blvd.
Ontario, CA 91761
(909) 923-7300 or (800) 347-1200
www.bianchi-intl.com

Brigade Gun Leather
33301 Osawatomie Rd
Osawatomie, KS 66064
(913) 755-3139
www.brigadegunleather.com

Comp-Tac
P.O. Box 1809
Spring, Texas 77383-1809
(281) 209-3040
www.comp-tac.com

DeSantis Holster & Leather Goods Co.
431 Bayview Avenue
Amityville, NY 11701
(631) 841-6300 or (800) 424-1236
www.desantisholster.com

Don Hume Leathergoods
500 26th Street NW
Miami, OK 74354
(918) 542-6604 or (800) 331-2686
www.donhume.com

Eagle Industries
1000 Biltmore Drive
Fenton, MO 63026
(888) 343-7547
www.eagleindustries.com

Fobus Holsters and Pouches
780 Haunted Lane
Bensalem, Pa 19020
(267) 803-1517
<http://www.fobusholster.com>

Galco International
2019 West Quail Avenue
Phoenix, Arizona 85027
(623) 434-7070 or (800) 874-2526
www.usgalco.com

Gun Gear
P.O. Box 9417
Bend, OR 97708
(541) 388-3984
www.gungear.com

Uncle Mike's
9200 Cody
Overland Park, KS 66214-1734
(913) 752-3400 or (800) 423-3537
www.uncle-mikes.com

Safariland
3120 E. Mission Blvd.
Ontario, CA 91761
(909) 923-7300 or (800) 347-1200
www.safariland.com

SpetzGear
135 S. Pintado Drive
Diamond Bar, CA 9765
(909) 802-5055
www.spetzgear.com

SECTION 9 WARRANTY

WARRANTY REGISTRATION

New HK firearms are covered by Heckler & Koch's Limited Lifetime Warranty. Warranty registration is now on-line. To register your new HK firearm, go to:

<http://hk-usa.com/warranty/register.html>

If you don't have access to the internet, contact HK Customer Service, 5675 Transport Boulevard, Columbus, Georgia 31907, TEL: 706-701-5554.

EMAIL: cs@heckler-koch-us.com to obtain a warranty registration form or card by mail.

HECKLER & KOCH, INC. LIFETIME LIMITED WARRANTY

Heckler & Koch Firearms Purchased After January 1, 1998.

All new Heckler & Koch Inc. firearms purchased after January 1, 1998, are warranted to the original retail purchaser only for the lifetime of the said original retail purchaser. In the event that this original retail purchaser, at the time of the original purchase, shall donate this firearm to another person, the donee (person who receives the firearm) must be listed on the warranty card (or donee's name must be submitted during the online warranty registration), and the warranty card must be returned at that time to Heckler & Koch Inc.

Upon completion of the online warranty registration or receipt of the warranty card indicating the name of the said donee, this warranty shall be extended to the lifetime of the said donee. This warranty applies only if the firearm was purchased from an Authorized Heckler & Koch Inc. Dealer in the United States, and it was imported into the United States and distributed by Heckler & Koch Inc. to an Authorized Heckler & Koch Inc. Dealer. This lifetime warranty explicitly excludes sales to government institutions or law enforcement agencies.

What Will We Do?

Heckler & Koch Inc. will, at its option, repair or replace without charge any Heckler & Koch Inc. firearm that fails due to a defect in materials or workmanship. Parts and labor are included. Repairs are warranted for the duration of the warranty. If Heckler & Koch Inc. replaces a firearm under this warranty; you will receive a new warranty. For any warranty repair or replacement, Heckler & Koch will return your firearm at no cost to the customer via common carrier and method of Heckler & Koch's choice.

How to Obtain Service:

Contact Heckler & Koch Inc. for a Return Authorization Number before sending your firearm freight prepaid to Heckler & Koch Inc. at the address listed below. No C.O.D. shipments will be accepted. Only the existing Heckler & Koch Inc. Service Center or any other authorized Heckler & Koch Inc. Service Center that may be established by Heckler & Koch Inc. shall be authorized to make warranty repairs. Return the complete, unloaded firearm with a detailed description of the problem. (DO NOT send any live ammunition with the firearm. If you must send ammunition to us for proof purposes, be sure that it is sent separately from the firearm).

You must provide Heckler & Koch Inc. with satisfactory proof of date of original purchase. We strongly recommend that you return a properly completed warranty registration card or an acknowledgment of online warranty registration to establish eligibility for warranty service. If you do not return a warranty card or an acknowledgment of online warranty registration to Heckler & Koch Inc., you are required at the time you send your firearm to Heckler & Koch Inc. warranty service to provide proof of the date that you purchased your new Heckler & Koch Inc. firearm. As stated earlier, in the event that this firearm was given as a gift at the time of original purchase, the warranty card/online warranty registration with the name of the donee must be provided to Heckler & Koch Inc., in order for the warranty to become effective. Note: Non-warranty servicing must follow the same shipping procedures as stated above. HK firearms with a valid Return Authorization Number should be addressed:

Heckler & Koch, Inc.
Attn: Service Department/RA# _____
5675 Transport Blvd.
Columbus, GA 31907 USA

What Is Not Covered?

This warranty does not cover defects or damage caused by: (1) unreasonable use; (2) failure to provide proper care or maintenance; (3) failure to comply with instructions in the owner's manual including improper installation of original Heckler & Koch Inc. parts by the owner or his agent; (4) normal wear and tear for the degree of use; (5) rust or corrosion; (6) obstructions in the barrels; (7) excessive use; (8) finish on the slide.

Heckler & Koch Inc. reserves the right to determine what constitutes the unreasonable or excessive use of the firearm. All wooden parts and all accessories are excluded from warranty coverage. This warranty does not cover any claims made by the second or subsequent owner of a Heckler & Koch Inc. firearm as stated above.

ANY UNAUTHORIZED ALTERATION OR MODIFICATION OF THE FIREARM OR USE OF PARTS OR COMPONENTS NOT ORIGINALLY MADE BY HECKLER & KOCH INC. SHALL VOID THIS WARRANTY. HECKLER & KOCH INC. SHALL NOT BE RESPONSIBLE FOR ANY CLAIMS INVOLVING THIS FIREARM THAT RESULT FROM THE USE OF FAULTY, NONSTANDARD, REMANUFACTURED, OR RELOADED AMMUNITION OR AMMUNITION NOT MANUFACTURED TO NATO AND/OR SAAMI SPECIFICATIONS.

Under no circumstances shall Heckler & Koch Inc. be responsible or liable for incidental or consequential damages with respect to loss of use, loss of business or profits, other economic loss or injury to property, whether as a result of breach of express or implied warranty, negligence or otherwise. This Lifetime Warranty applies only to retail purchases by individuals. Heckler & Koch Inc. firearms purchased by law enforcement, military, and security organizations for duty issue to their personnel are covered by a limited one-year warranty.

Some states do not allow the exclusion or limitation of incidental or consequential damages, so the above limitation or exclusion may not apply to you. This warranty gives you specific legal rights, and you may also have other rights, which vary from state to state. This limited warranty is the only express warranty by Heckler & Koch Inc.

Heckler & Koch Inc. authorizes no dealer or any other person to vary the terms of this warranty or make any other express warranties.

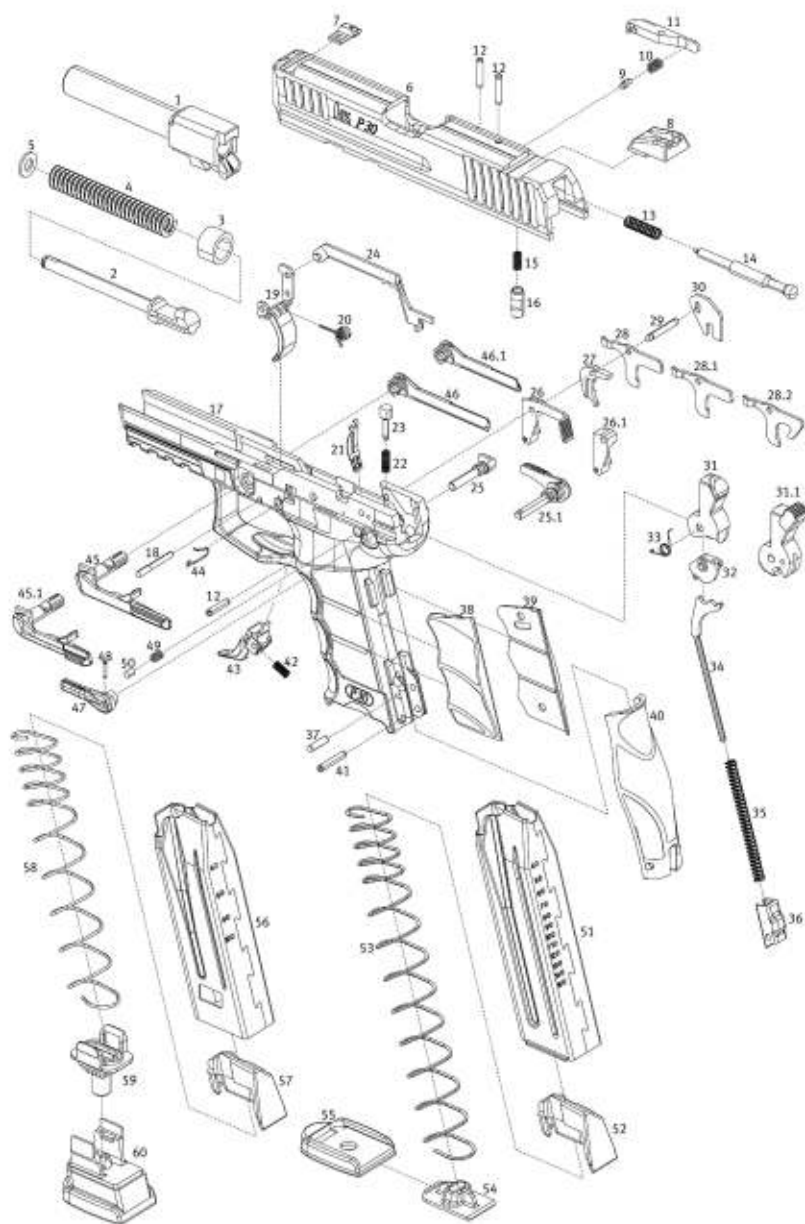
Where to Get Further Help

If you have questions concerning this warranty, please contact HK Customer Service at: 5675 Transport Blvd., Columbus, GA 31907, Telephone: 706-701-5554.
Email: cs@heckler-koch-us.com

SECTION 10 PARTS LIST (P30 MODELS)

Item	Description	Identification No.	Item	Description	Identification No.
1	Barrel (9 mm x 19)	229931		Grip shell, right (size L)	234307
	Barrel (.40 S&W)	229751	40	Back Strap, (size M)	234302
2-5	Recoil Spring Complete (9 mm x 19)	234319		Back strap (size S)	234299
	Recoil Spring Complete (.40 S&W)	229844		Back strap (size L)	234305
2	Recoil Spring guide rod	234310	41	Backstrap pin	50978170
3	Stop Sleeve	50215932	42	Magazine release spring	50215929
4	Recoil Spring (9 mm x 19)	215852	43	Magazine release	50234296
	Recoil Spring (.40 S&W)	50215830	44	Slide release spring	50214171
5	Recoil Spring stop disc	50215831	45	Slide release left (P30 V1 and V3)	202805
6	Slide (9 mm x 19)	229877	45.1	Slide release left (alt) (P30 SV3)	227722
	Slide (.40 S&W)	229773	46	Slide release right (P30 V1 and V3)	202806
7	Front sight, height 5.9 mm	227711	46.1	Slide release right (alt) (P30 SV3)	227723
7.1	Front sight, height 6.1 mm	50234327	47	Safety lever (P30 SV3)	227814
7.2	Front sight, height 6.3 mm	51001085	48	Safety lever pin (P30L SV3)	982783
7.3	Front sight, height 6.5 mm	234329	49	Detent pin spring (P30 SV3)	209478
7.4	Front sight, height 6.7 mm	234386	50	Detent pin (P30 SV3)	234316S
7.5	Front sight, height 6.9 mm	234387		Magazine 9 mm 15 Round (9 mm x 19)	234316
8	Rear sight	51001048		Magazine .40 S&W 13 Round	
9	Extractor bolt	50209294		(.40 S&W)	229845S
10	Extractor spring	50218315	51	Magazine housing (9 mm x 19)	234318
11	Extractor	218314		Magazine housing (.40 S&W)	229774
12	Extractor and mag. release pin (3x)	50988891	52	Follower	215836
13	Firing pin spring	50215822	53	Spring	215118
14	Firing pin	234654	54	Locking plate	215844
15	Firing pin safety spring	209962	55	Floor plate	234298
16	Firing pin safety	50209313		Magazine 9 mm 10 Round	229750S
17	Frame (P30 V1)	234294		Magazine .40 S&W 10 Round	
	Frame (P30 V3)	234388		(.40 S&W)	229970S
	Frame (P30 SV3)	227832	56	Magazine housing 9mm 10 Round	215848
18	Trigger pin	50214154		Magazine housing 9mm 15 Round	234318
19	Trigger	234297		Magazine housing .40 S&W 10 Round	215833
20	Trigger spring	234389		Magazine housing .40 S&W 13 Round	229774
21	Leaf spring for catches	50214167	57	Follower	215836
22	Trigger bar detent spring	209270	58	Spring 9mm 10 Round	214850
23	Trigger bar detent	209269		Spring 9mm 15 Round	215118
24	Trigger bar	207331		Spring .40 S&W 10 Round	214821
25	Hammer axle (P30 V1 and V3)	209272		Spring .40 S&W 13 Round	215118
25.1	Hammer axle with safety lever		59	Locking plate 9mm 10 Round	215850
	(P30 SV3)	227813		Locking plate 9mm 15 Round	215844
26	Release catch and the decocking lever			Locking plate .40 S&W	
	(P30 V3 and SV3)	209261		10 Round	215835
26.1	Release catch (P30 V1)	209320		Locking plate .40 S&W	
27	Hammer Catch	209273		13 Round	215844
28	Control Lever (P30 V1)	209274	60	Floor plate 9mm 10 Round	227947
28.1	Control Lever (P30 V2)	234487		Floor plate 9mm 15 Round	234298
28.2	Control Lever (P30 V3)	227812		Floor plate .40 S&W 10 Round	229971
29	Pin	234758		Floor plate .40 S&W 13 Round	234298
30	Disconnecter (P30 V1 and V3)	209271	61	Magazine 9mm 17 Round	50255803
	Disconnecter (P30 SV3)	229804			
31	Hammer (P30 V1)	209321			
31.1	Hammer (P30 V3 and SV3)	209327			
32	Cocking piece (P30 V1)	209265			
33	Elbow spring for hammer (P30 V1)	209275			
34	Hammer spring rod	209312			
35	Hammer spring (P30 V1)	50214695			
	Hammer spring (P30 V3 and SV3)	50214300			
	Lock-out Device/Gun Lock Complete	234664			
36	Bearing for Gun lock/Grip Insert	234295			
37	Pin	50970074			
38	Grip Shell, left (size M)	234303			
	Grip shell, left (size S)	234300			
	Grip shell, left (size L)	234306			
39	Grip Shell, right (size M)	234304			
	Grip shell, right (size S)	234301			

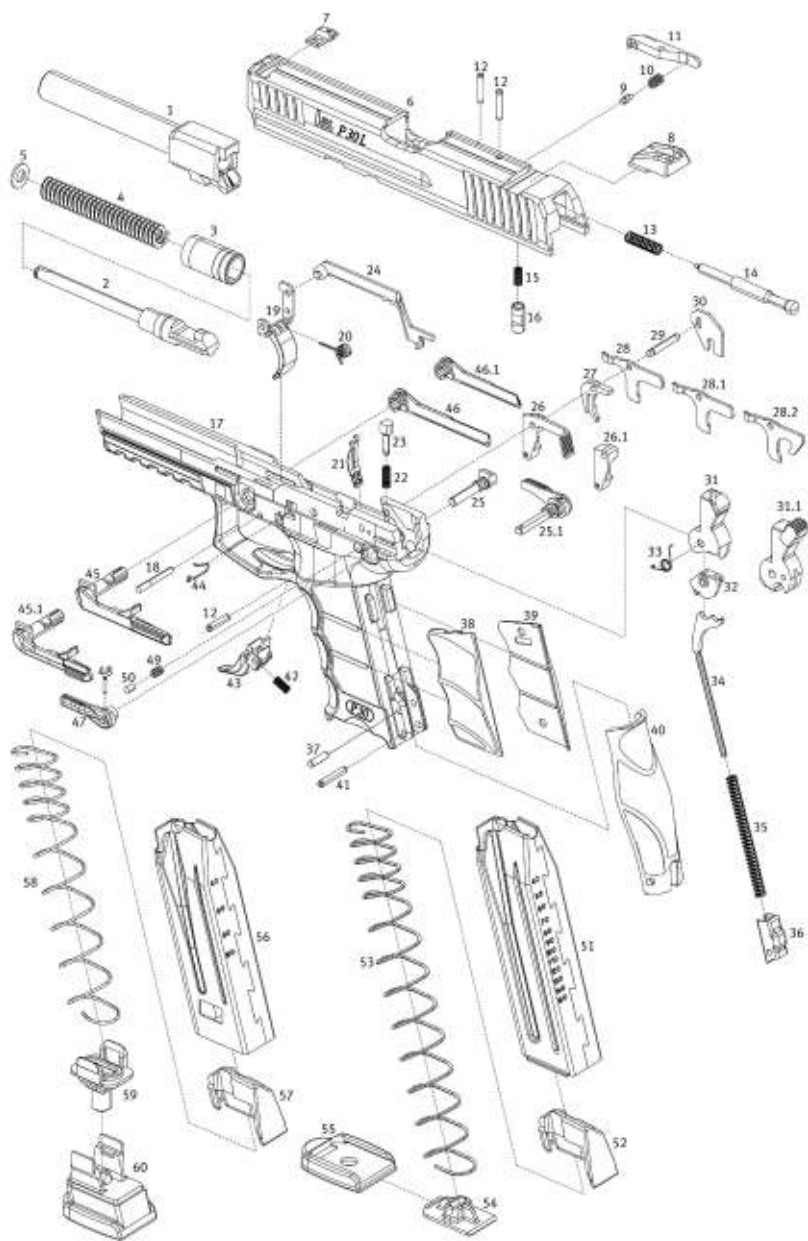
Figure 51
Exploded Diagram (P30 Models)



PARTS LIST (P30L MODELS)

Item	Description	Identification No.	Item	Description	Identification No.
1	Barrel (9 mm x 19)	227713		Grip shell, right (size L)	234307
	Barrel (.40 S&W)	229944	40	Back Strap, (size M)	234302
-	Threaded Barrel (9 mm x 19)	229792		Back strap (size S)	234299
2-5	Recoil Spring Complete (9 mm x 19)	227845		Back strap (size L)	234305
	Recoil Spring Complete (.40 S&W)	229947	41	Backstrap pin50978170
2	Recoil Spring guide rod	227714	42	Magazine release spring50215929
3	Stop Sleeve	223275	43	Magazine release50234296
4	Recoil Spring (9 mm x 19)	215852	44	Slide release spring50214171
	Recoil Spring (.40 S&W)50215830	45	Slide release left (P30L V1 and V3)	202805
5	Recoil Spring stop disc	223275	45.1	Slide release left (alt) (P30L SV3)	227722
6	Slide (9 mm x 19)	227712	46	Slide release right (P30L V1 and V3)	202806
	Slide (.40 S&W)	229946	46.1	Slide release right (alt) (P30L SV3)	227723
7	Front sight, height 5.9 mm	227711	47	Safety lever (P30L SV3)	227814
7.1	Front sight, height 6.1 mm50234327	48	Safety lever pin (P30L SV3)982783
7.2	Front sight, height 6.3 mm	51001048	49	Detent pin spring (P30L SV3)	209478
7.3	Front sight, height 6.5 mm	234329	50	Detent pin (P30L SV3)	209477
7.4	Front sight, height 6.7 mm	234386		Magazine 9 mm 15 Round	234316S
7.5	Front sight, height 6.9 mm	234387		Magazine .40 S&W 13 Round (.40 S&W)	229845S
8	Rear sight	51001048	51	Magazine housing (9 mm x 19)	234318
9	Extractor bolt50209294		Magazine housing (.40 S&W)	229774
10	Extractor spring50218315	52	Follower	215836
11	Extractor	218314	53	Spring	215118
12	Extractor and mag release pin (3x)50988891	54	Locking plate	215844
13	Firing pin spring50215822	55	Floor plate	234298
14	Firing pin	234654		Magazine 9mm 10 Round	229750S
15	firing pin safety spring	209962		Magazine .40 S&W 10 Round	229970S
16	Firing pin safety50209313	56	Magazine housing 9mm 10 Round	215848
17	Frame (P30L V1)	227546		Magazine housing .40 S&W 10 Round	215833
	Frame (P30L V3)	227858	57	Follower	215836
	Frame (P30L SV3)	229942	58	Spring 9mm 10 Round	214850
18	Trigger pin50214154		Spring 9mm 15 Round	215118
19	Trigger	234297		Spring .40 S&W 10 Round	214821
20	Trigger spring	234389		Spring .40 S&W 13 Round	215118
21	Leaf spring for catches50214167	59	Locking plate 9mm 10 Round	215850
22	Trigger bar detent spring	209270		Locking plate 9mm 15 Round	215844
23	Trigger bar detent	209269		Locking plate .40 S&W 10 Round	215835
24	Trigger bar	207331		Locking plate .40 S&W 13 Round	214844
25	Hammer axle (P30L V1 and V3)	209272	60	Floor plate 9mm 10 Round	227947
25.1	Hammer axle with safety lever (P30L SV3)	227813		Floor plate 9mm 15 Round	234298
26	Release catch and the decocking lever (P30 V3 and SV3)	209261		Floor plate .40 S&W 10 Round	229971
26.1	Release catch (P30L V1)	209320		Floor plate .40 S&W 13 Round	234298
27	Hammer Catch	209273	61	Magazine 9mm 17 Round50255803
28	Control Lever (P30L V1)	209274			
28.1	Control Lever (P30L V2)	234487			
28.2	Control Lever (P30L V3)	227812			
29	Pin	234758			
30	Disconnecter	229804			
31	Hammer (P30L V1)	209321			
31.1	Hammer (P30L V3 and SV3)	209327			
32	Cocking piece (P30L V1)	209265			
33	Elbow spring for hammer (P30] V1)	209275			
34	Hammer spring rod	209312			
35	Hammer spring (P30L V1)	214695			
	Hammer spring (P30L V3 and SV3)50214300			
	Lock-out Device/Gun Lock Compl.50234664			
36	Bearing for Gun lock/Grip Insert	234665			
37	Pin50970074			
38	Grip Shell, left (size M)	234303			
	Grip shell, left (size S)	234300			
	Grip shell, left (size L)	234306			
39	Grip Shell, right (size M)	234304			
	Grip shell, right (size S)	234301			

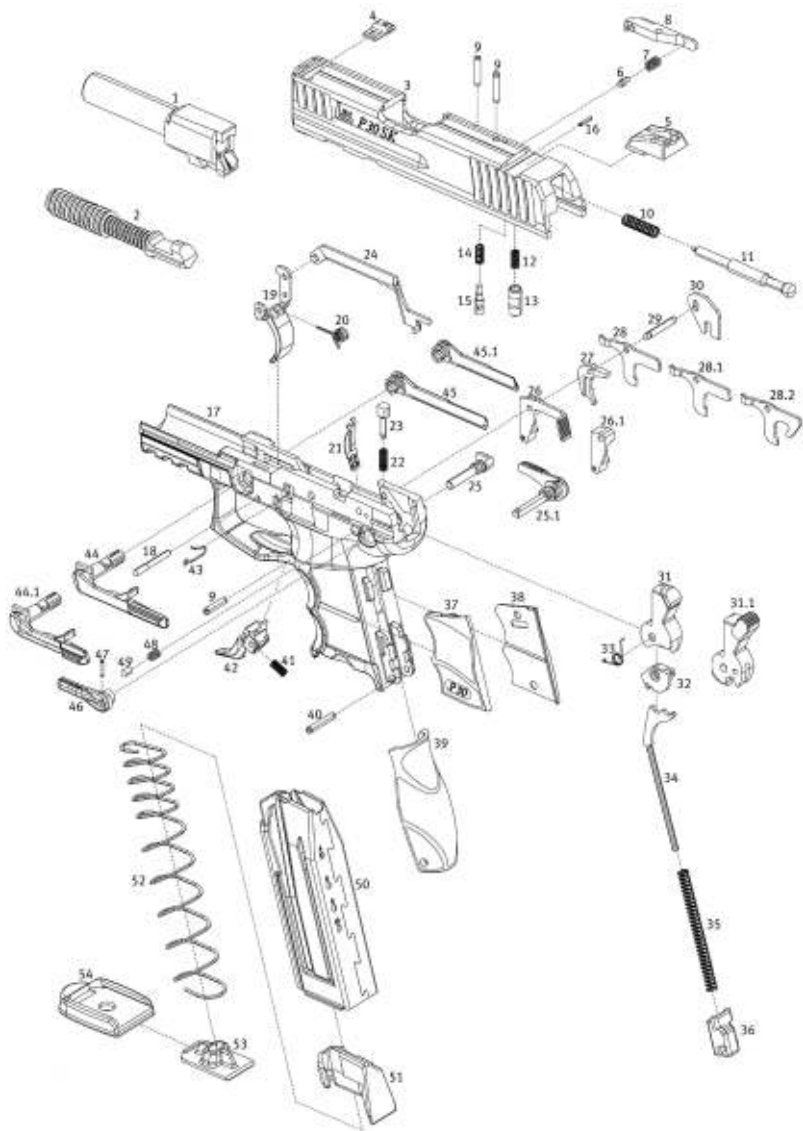
Figure 52
Exploded Diagram (P30L Models)



PARTS LIST (P30SK MODELS)

Item	Description	Identification No.	Item	Description	Identification No.
1	Barrel (9 mm x 19)	207120	41	Magazine release spring	50215929
2	Recoil Spring Complete (9 mm x 19)	226221	42	Magazine release	223522
3	Slide (9 mm x 19)	50247150	43	Slide release spring	50214171
4	Front sight, height 5.9 mm	227711	44	Slide release left (P30SK V1	
4.1	Front sight, height 6.1 mm	50234327		and V3)	202805
4.2	Front sight, height 6.3 mm	51001085	44.1	Slide release left (alt) (P30SKS V3)	227722
4.3	Front sight, height 6.5 mm	234329	45	Slide release right (P30SK V1 and V3)	202806
4.4	Front sight, height 6.7 mm	234386	45.1	Slide release right (alt) (P30SKS V3)	227723
4.5	Front sight, height 6.9 mm	234387	46	Safety lever (P30SK SV3)	227814
5	Rear sight	51001048	47	Safety lever pin (P30L SV3)	982783
6	Extractor bolt	50209294	48	Detent pin spring (P30SKS V3)	209478
7	Extractor spring	50218315	49	Detent pin (P30SKS V3)	209477
8	Extractor	218314		Magazine 9 mm 10 Round	2235155
9	Extractor and mag release pin (3x)	50988891	50	Magazine housing	207162
10	Firing pin spring	50218522	51	Follower	215836
11	Firing pin	229993	52	Spring	207218
12	Firing pin safety spring	209962	53	Insert/Locking plate	202693
13	Firing pin safety	50209313	54	Floor plate	234298
14	Drop safety spring	229992	-	Extended floor plate	239284
15	Drop safety	229991			
16	Drop safety pin	973112			
17	Frame (P30SK V1)	245265			
	Frame (P30SK V3)	245266			
	Frame (P30SK SV3)	245267			
18	Trigger pin	50214154			
19	Trigger	234297			
20	Trigger spring	234389			
21	Leaf spring for catches	50214167			
22	Trigger bar detent spring	209270			
23	Trigger bar detent	209269			
24	Trigger bar	207331			
25	Hammer axle (P30SK V1 and V3)	209272			
25.1	Hammer axle with safety lever (P30SK SV3)	227813			
26	Release catch and the decocking lever (P30SK V3 and SV3)	209261			
26.1	Release catch (P30SK V1)	209320			
27	Hammer Catch	209273			
28	Control Lever (P30SK V1)	209274			
28.1	Control Lever (P30SK V2)	234487			
28.2	Control Lever (P30SK V3)	227812			
29	Pin	234758			
30	Disconnecter	229804			
31	Hammer (P30SK V1)	209321			
31.1	Hammer (P30SK V3 and SV3)	209327			
32	Cocking piece (P30SK V1)	209265			
33	Elbow spring for hammer (P30SK V1)	209275			
34	Hammer spring rod	207121			
35	Hammer spring	207122			
	Lock-out Device/Gun Lock Complete	226222			
36	Bearing for Gun lock/Grip Insert	223521			
37	Grip Shell, left (size M)	223506			
	Grip shell, left (size S)	223503			
	Grip shell, left (size L)	223509			
38	Grip Shell, right (size M)	223507			
	Grip shell, right (size S)	223504			
	Grip shell, right (size L)	223510			
39	Back Strap, (size L)	223508			
	Back strap (size S)	223502			
	Back strap (size M)	223505			
40	Backstrap pin	50978170			

Figure 53
Exploded Diagram (P30SK Models)



HECKLER & KOCH

HECKLER & KOCH
5675 Transport Boulevard
Columbus, Georgia 31907
Tel: 706-701-5554
USA Website: www.hk-usa.com



This product can expose you to chemicals including lead, which is known to the State of California to cause cancer and birth defects or other reproductive harm. For more information go to www.P65Warnings.ca.gov.